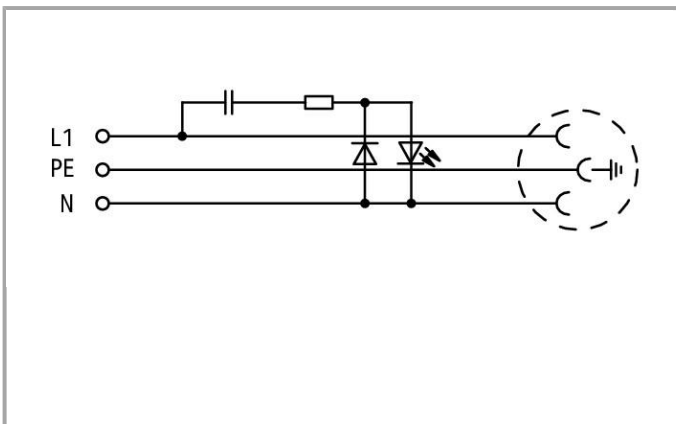
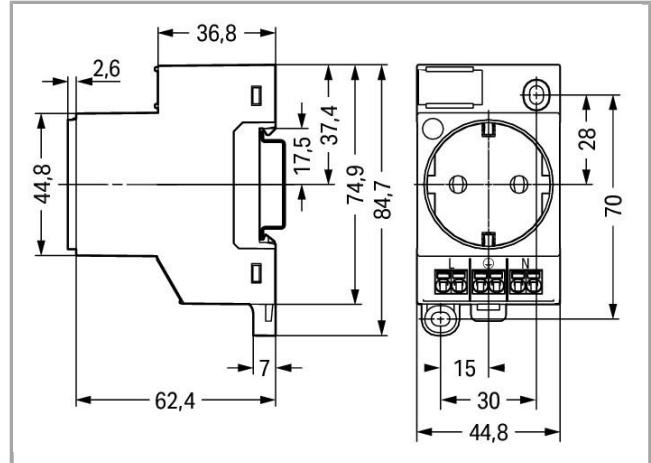


Data sheet | Item number: 709-583

Switchgear cabinet outlet; for DIN-rail and screw mounting; for plug, type F, CEE 7/4 (Schuko); common in DE, NL, AT; with LED status indicator; with Push-in Cage Clamp double connection; red



709-583



Item description

Safety information 1:

Installation erfordert Elektrofachkraft

Safety information 2:

During the insulation resistance test, the active conductors must be connected.

The integrated status indicator in the control cabinet outlet must be protected against transient overvoltages.

Overvoltage protection in low-voltage systems must be observed.

Data**Electrical data**

Voltage type (1)	AC
------------------	----

Ratings per IEC/EN 60664-1

Rated voltage (III / 3)	250 V
Rated impulse voltage (III / 3)	2 kV
Rated current	16 A

Connection data

Connection type (1)	L, PE, N
Connection technology	Push-in CAGE CLAMP®
Actuation type	Push-in
Actuation direction (1)	Operation parallel to conductor entry
Connectable conductor materials	Copper
Nominal cross section	2.5 mm ²
Solid conductor	0.2 2.5 mm ² / 24 14 AWG
Stranded conductor	0.2 2.5 mm ² / 24 14 AWG
Fine-stranded conductor	0.2 2.5 mm ² / 24 14 AWG
Strip length	9 10 mm / 0.35 0.39 inch
Number of connection types	3
Number of test slots	2
No. of poles	3

Geometrical Data

Width	45 mm / 1.772 inch
Height	65 mm / 2.559 inch
Height from the surface	65 mm / 2.559 inch
Height from upper-edge of DIN-35 rail	59.8 mm / 2.354 inch
Depth	84.7 mm / 3.335 inch

Mechanical data

Type of mounting	DIN-35 rail
Protection class	IP20
Potential marking	L N

Material Data

Color	red
Material group	I
Insulating material	Polyamide 66 (PA 66)
Flammability class per UL94	V0
Clamping spring material	Chrome nickel spring steel (CrNi)
Contact material	Copper alloy
Contact plating	Sn
Weight	81.6g

Environmental Requirements


Continuous operating temperature	-35 +85 °C
----------------------------------	------------

Commercial data

Country of origin	BG
GTIN	4055143718301
Customs Tariff No.	85366990990

Approvals / Certificates

Country specific Approvals

Logo	Approval	Additional Approval Text	Certificate name
	VDE VDE Prüf- und Zertifizierungsinstitut	-	40047680 (IEC 60884-1)

Downloads

Documentation

Bid Text

709-583	docx 16.5 kB	Download
---------	-----------------	----------

CAD/CAE - Smart Data

CAD data

3D Download 709-583	URL	Download
---------------------	-----	----------

EPLAN



Subject to changes.
